

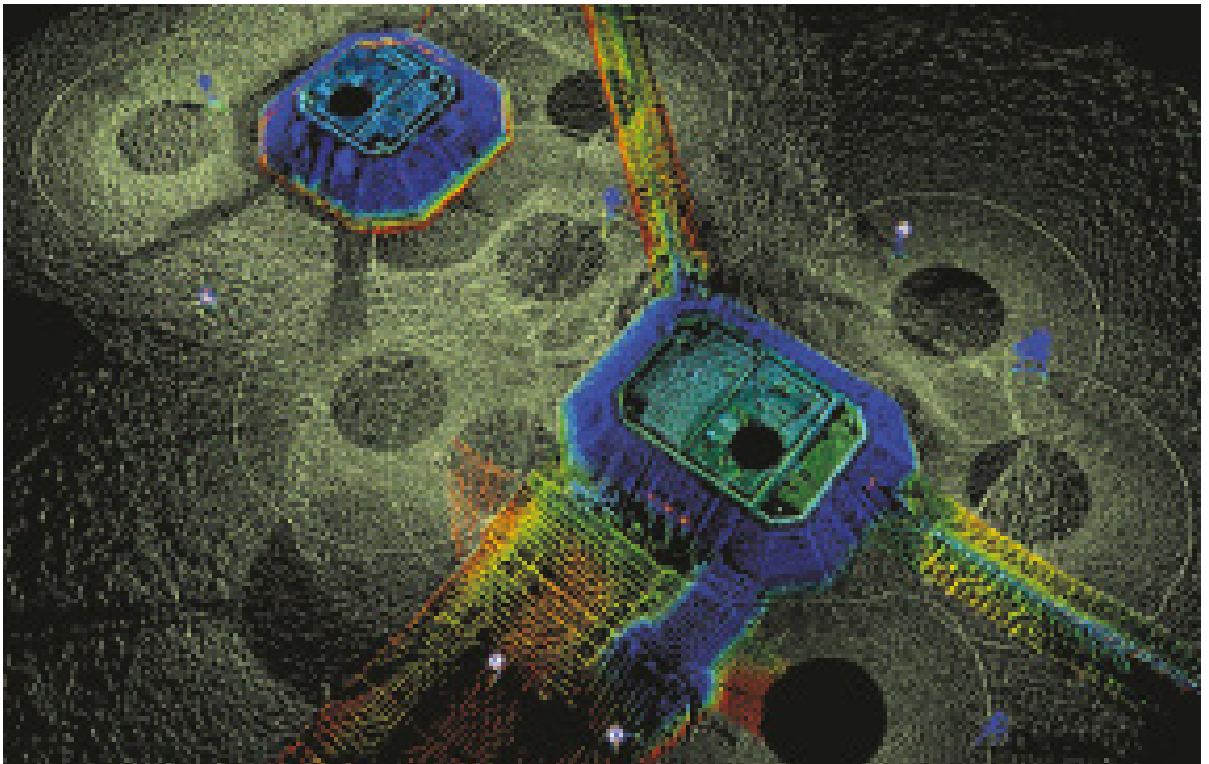


CODEVINTEC

Tecnologie per le Scienze della Terra e del Mare

45° 27' 39.384" N
9° 07' 30.145" E

BV5000 **3D Mechanical Scanning Sonar**



BlueView's BV5000-1350 3D mechanical scanning sonar creates high resolution imagery of underwater areas, structures, and objects.

Applications

- > 3D site survey
- > 3D structure inspection
- > Rig decommissioning
- > Bridge inspections
- > Underwater metrology



BV5000

3D Mechanical Scanning Sonar

BlueView's BV5000-1350 3D mechanical scanning sonar creates high resolution imagery of underwater areas, structures, and objects. With the touch of a button, the 3D mechanical scanning sonar creates 3D point clouds of an underwater scene with minimal training required. These compact, lightweight units are easily deployed on a tripod or an ROV. The scanning sonar head and integrated mechanical pan and tilt mechanism generate both sector scans and spherical scan data. For the first time, get 3D laser-like scanning capabilities underwater, even in low and zero visibility conditions and seamless integration with traditional laser scan imagery.

Product features & benefits

- > Easy, one-touch scan function
- > 3D mosaic imaging without position info
- > Easily combined with laser scan imagery
- > Compact size fits into tight spaces
- > Operates in low and zero visibility conditions
- > Standard Ethernet/RS485 interface
- > Easy Windows-based software
- > Leica Cyclone data compatible
- > Sector and spherical scans



**BV5000**
3D Mechanical Scanning Sonar**Technical Specifications BV5000-1350**

Sonar & Software	Sector/Spherical Scan Area (°)	45 - 360
	Sonar Field of View (°)	42 x 1
	Update Rate (Hz)	Up to 40
	Frequency (MHz)	1.35
	Maximum Range	30 m (98 ft.)
	Optimum Range	1 - 20 m (3.2 - 65 ft.)
	Number of Beams	256
	Beam Width (°)	1 x 1
	Beam Spacing (°)	0.18
	Time Resolution	0.015 m (0.59 in.)
	Data Output Format	.son, and .xyz files
	Mechanical	Size (L x W x H in inches)
Weight in Air/Water (lbs.)		21.7/8.2
Depth Rating		1000 m (3.280 ft.) / 4,000 m (13,123 ft.)
Coms (Sonar/Pan & Tilt)		Ethernet/RS485
Power Consumption (W)		45 max.
Power Requirement (V DC)		20 - 29

Standard equipment and available option

	Included	Optional
Hardware	MB1350 Sonar	25 ft. Sonar, Pan & Tilt Cable (1 included w/ BV5000 Accessory Kit)
	Pan & Tilt w/ mounting hardware	25ft or 150ft ft. Sonar, Pan & Tilt Cable Assembly
	Sonar, Pan & Tilt junction box	(needed for tripod and fixed mount systems)
	Shipping case	4 ft Sonar whip, 2 ft pan and tilt whip kit w/ Wiring Diagram
	Accessory kit*	(needed for ROV mount systems)
Software	RS485 to USB drivers	QuickStitch
	ProScan 1.3 (or current)	
Manuals	BV5000 User Handbook	Quick Start Guide
Training		On-Site "Getting Started" hardware/Software (per day)
Warranty	1 Year	Extended Warranty (per year)

* Accessory kit includes: Retract-A-Bit Hex Driver; 7 ft. Cat 5 Ethernet Cable; 25 ft. Sonar/Pan & Tilt Cable; 2 m USB Cable; 15A US Power Cord; RS485 to USB driver CD; ProScan 1.3 (or current).

**All beamwidths are nominal values.