



Geophysical Survey Systems, Inc.

## Marketing Sales Release

### New Product Release

**Market:** Worldwide

**Product Name:** Palm XT Antenna

**GSSI Part Number:** FGMOD62300-XT

#### **General Description:**

[GSSI](#) announces a new accessory for the StructureScan Mini XT. The Palm XT is a miniaturized GPR antenna that is designed to greatly enhance the capabilities of the StructureScan™ Mini XT concrete inspection system. The handheld Palm XT antenna turns the Mini XT into an advanced system by giving users access in tightly spaced areas and enables easier overhead scanning. Designed to withstand challenging construction sites, the Palm XT is an excellent choice for contractors who need to perform concrete scanning services.

The 2300 MHz Palm XT antenna offers superior depth penetration and resolution. It features full keypad control via the antenna top which allows for remote control of the user interface. The antenna has seamless software integration and provides users with three data collection modes; standard, cross polarization, and side car. Standard mode requires no special set up, and is ready for plug-and-play operation. Cross polarization mode highlights non-metallic objects, such as PVC, and deemphasizes metallic objects like rebar and wire mesh. Side car mode transitions the survey wheel to the side of the antenna and allows it to fit into smaller spaces.

[www.geophysical.com](http://www.geophysical.com)

40 Simon Street • Nashua, NH 03060-3075  
Tel: 603.893.1109 • Toll Free: 800.524.3011 • Fax: 603.889.3984



Geophysical Survey Systems, Inc.

**Special Features Include:**



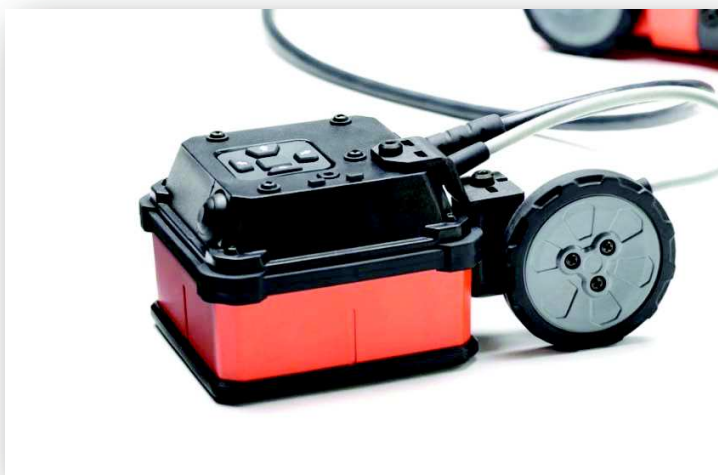
**Compact Antenna Design** – The Palm XT antenna is the industry's smallest concrete antenna. This antenna was designed to access hard to reach and tight areas found on construction sites. The Palm XT's small size allows the antenna to reach 1.2"(3 cm) closer to walls on approach and 1.1"(2.8 cm) closer to walls on the side of the antenna when compare to the Mini XT.



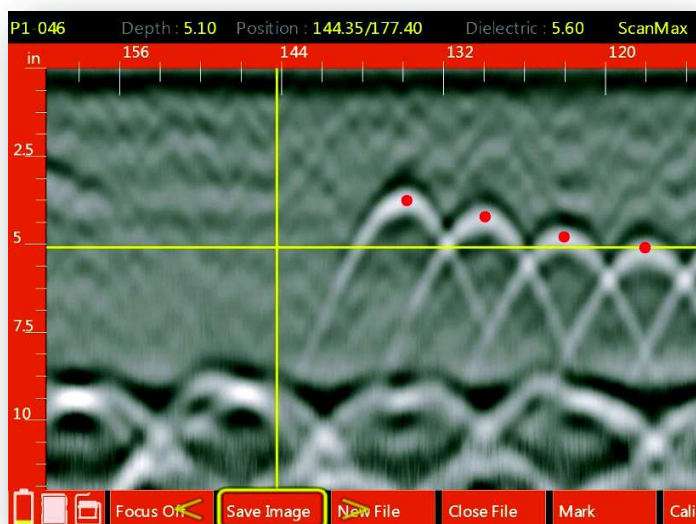
**StructureScan Mini XT Controller Concept** – Simply remove the handle and attach the Palm XT antenna connector. This transforms the Mini XT into a small portable controller.



Geophysical Survey Systems, Inc.



**Rugged Design** – The Palm XT antenna features rubber bumpers designed to protect the antenna housing and are also used as a grip surface for the antenna. The design of the survey wheel and cable strain relief has been engineered to minimize field failures.



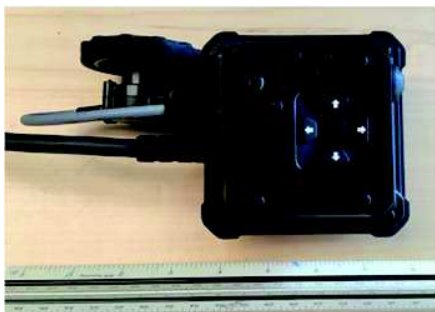
**User Interface** – Once the Palm XT antenna is attached all the user interface button controls are identical to the Mini XT antenna keypad.



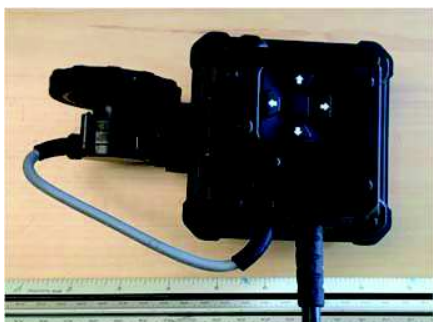
Geophysical Survey Systems, Inc.

**Survey Wheel Data Collection Options** – Using the hex head driver, provided with the StructureScan Mini XT, users can easily change the position of the survey wheel to best accommodate their data collection needs.

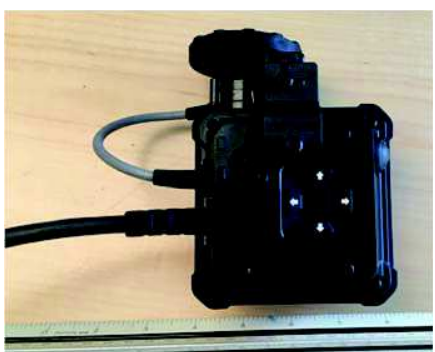
**Palm XT features three survey wheel position options:**



**Standard Mode** - Requires no special set up, survey wheel trails the antenna body.



**Cross Polarization Mode** - Highlights non-metallic objects such as PVC while de-emphasizing metallic objects such as rebar and wire mesh.



**Side Car Mode** - Transitions the survey wheel to the side of the antenna to allow it to fit into smaller spaces. Best suited for concrete beams and areas where the start of the scan needs to be close to a wall or object.

[www.geophysical.com](http://www.geophysical.com)

40 Simon Street • Nashua, NH 03060-3075

Tel: 603.893.1109 • Toll Free: 800.524.3011 • Fax: 603.889.3984