

# DEEP

A powerful GPR sensor designed to provide superior depth capabilities in challenging environments.



**DEEP** is a ground-coupled GPR sensor. A sensor that contains everything needed to map deeper subsurface features.

Using patented step-frequency ultra-wideband technology, this sensor features a unique combination of high-resolution near-surface imaging and deep penetration capabilities.

The sensor collects 3-dimensional data using a frequency band from 30MHz to 1,500 MHz, providing dense, accurate, high-quality subsurface imagery at all depths.

**DEEP** is used for multiple applications. It is ideal for deep utility mapping projects, sinkhole and void detection, archaeology, and deep subsurface structure.

The system is easy to deploy and begin collecting subsurface information straight out of the box. **DEEP** is equipped with RTK GPS and IMU for precise positioning. It includes embedded data collection software for area coverage and customizing survey options.

## Key features

A powerful sensor designed to provide superior depth capabilities

Patented step-frequency technology using 30 - 1,500 MHz

Capture wide 3-dimensional swath of the subsurface in one pass

Minimal components for quick set-up in the field

Integrated RTK GPS

Supplied with external GPS antenna

Integrated IMU

User controllable survey collection settings

Examiner Collect software for survey control and area coverage included



## Technical specifications

	DEEP 1808
Number of channels	8
Effective scan width	1.32 m 4.3 ft
Size (L x W x H m)	1.84 x 1.3 x 0.15
Weight	68 kg
Transport container size (L x W x H m)	2.0 x 1.4 x 0.3
Transport container weight	75 kg

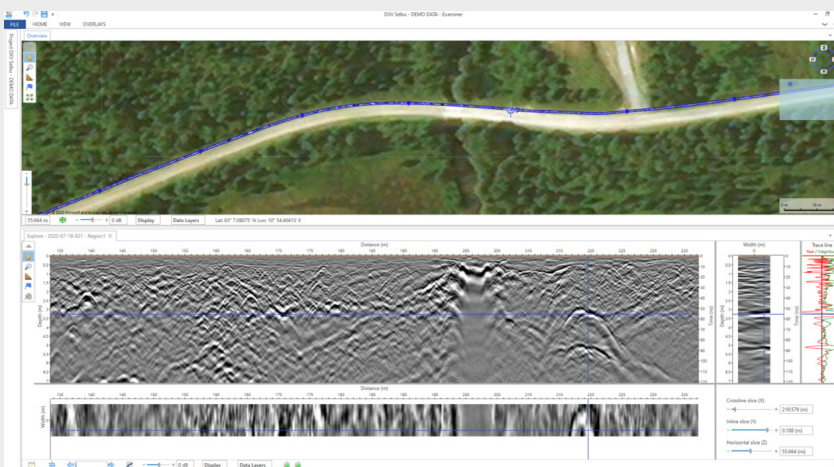
## Applicable to DEEP

**Frequency range ETSI:** 30 - 1,500 MHz  
**FCC:** Pending

**Channel spacing:** 16,5 cm / 6 in (Cross line)

*Note: Specifications are subject to change. Other DEEP sensor widths are available on a custom order basis.*

*Contact the Kontur team for additional information at [sales@kontur.tech](mailto:sales@kontur.tech)*



**Figure 1** DEEP data sample taken from Examiner Specialist

## Application areas

### UTILITY MAPPING

Wider antenna arrays ideally suited for large-scale utility mapping and field work. Designed to reach even deeper to detect utilities that would otherwise be hard to find.

### ROAD & PAVEMENTS

Deploy DEEP to detect deeper road construction and identify failures such as voids.

### PIPELINES

Efficient mapping of deeper and large pipeline infrastructure.

### ARCHAEOLOGY

Increased depth, multichannel antenna array support and high resolution reduce data collection time while providing the best possible imagery.

### GEOLOGY

Locate and map geological and environmental features such as cavities and sink-holes under ground.

## Accessories

- Skid plate
- Trailer
- DMI/Odometer with wheel adapter

## Related Kontür products

- AIR
- GROUND
- Examiner Collect
- Examiner™ Specialist
- Examiner Explore



**CODEVINTEC**

Tecnologie per le Scienze della Terra e del Mare

Codevintec Italiana srl

Milano  
Roma

via Labus, 13 – 20147 Milano  
Lenormant, 215-217 – 00119 Roma

[info@codevintec.it](mailto:info@codevintec.it)  
[www.codevintec.it](http://www.codevintec.it)

ph +39 02 4830.2175

*\* Mk6 product series is not available in the USA. Pending FCC approval. Mk4 product series is available globally.*

© Copyright 2023. KONTÜR AS. All rights reserved.